



Balkonkraftwerk SET-600W

# Montageanleitung



## MONTAGEANLEITUNG

Balkonkraftwerk SET-600W

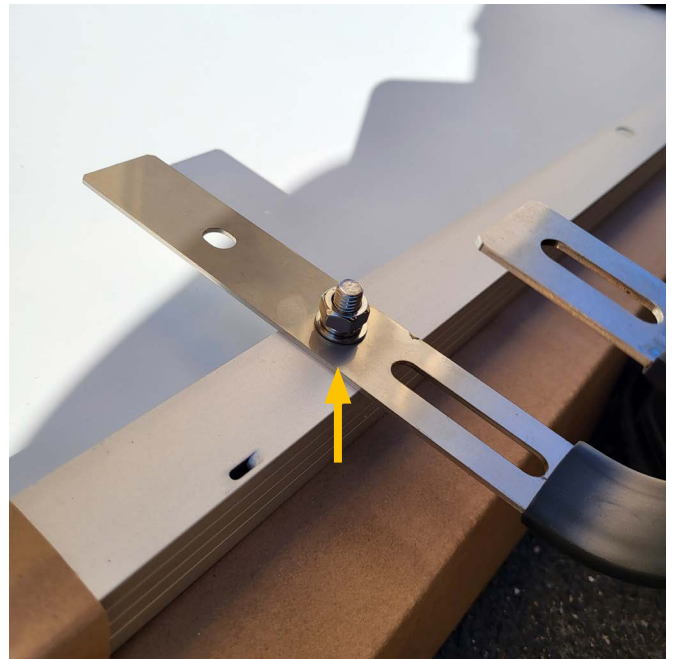
### Inhalt

- 2x 405W Solarmodule
- 1x 600W Wechselrichter
- 1x Anschlusskabel (3m)
- 1x Befestigungsmaterial für Balkonmontage



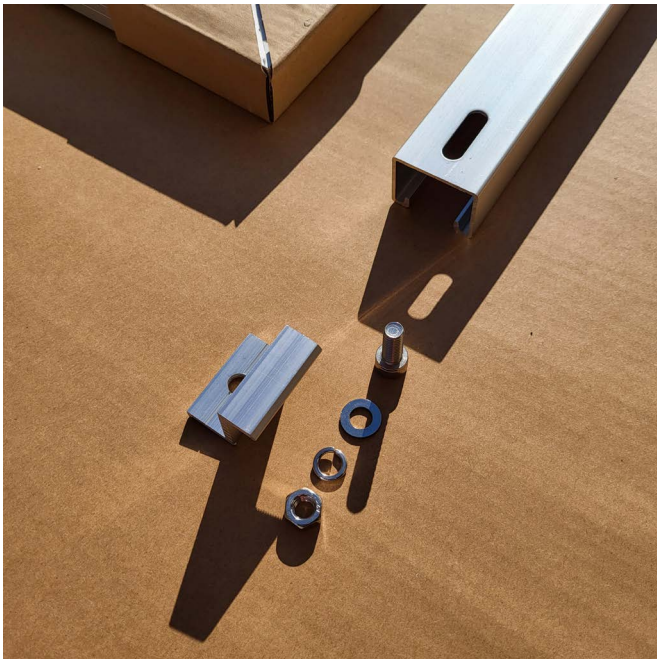
# MONTAGEANLEITUNG

Balkonkraftwerk SET-600W



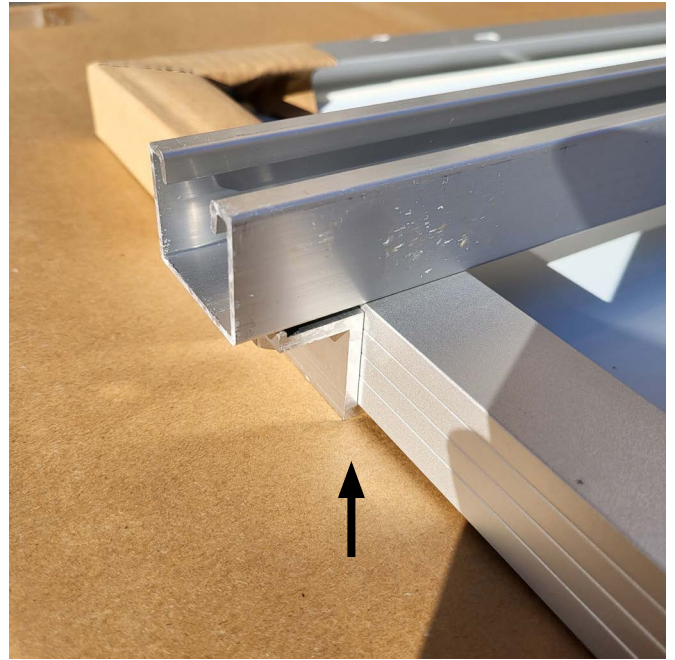
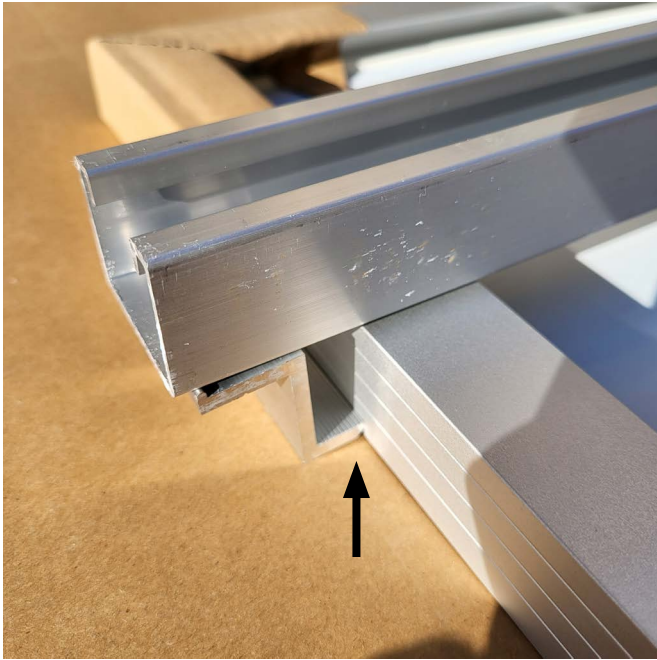
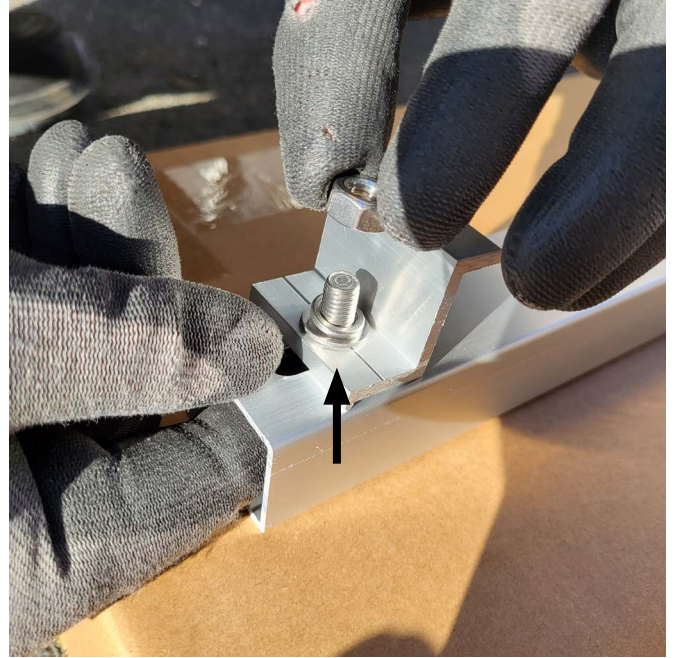
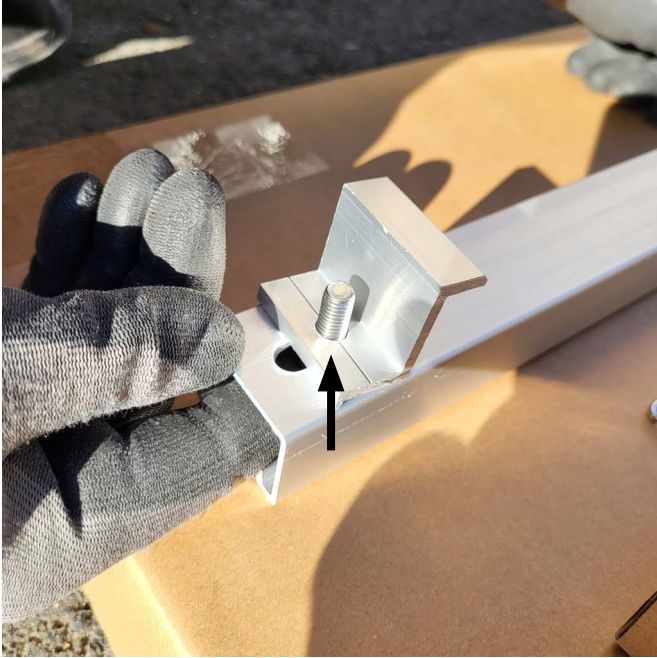
# MONTAGEANLEITUNG

Balkonkraftwerk SET-600W



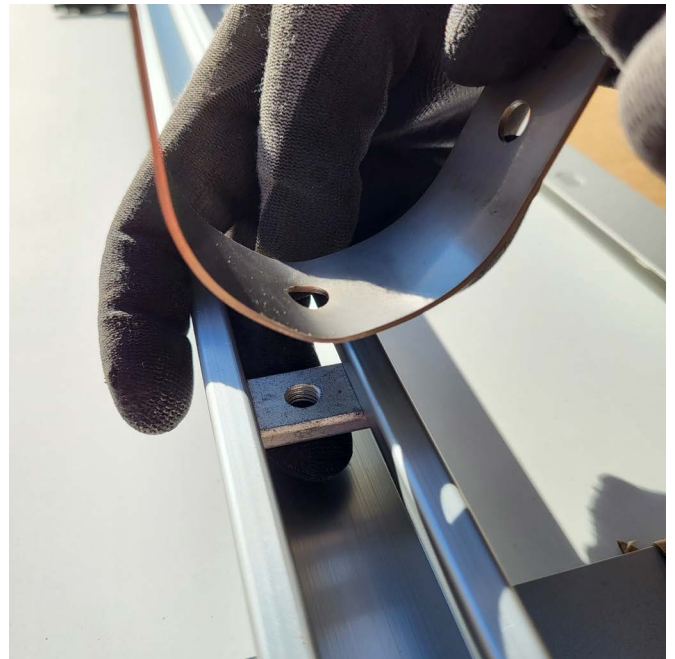
# MONTAGEANLEITUNG

Balkonkraftwerk SET-600W



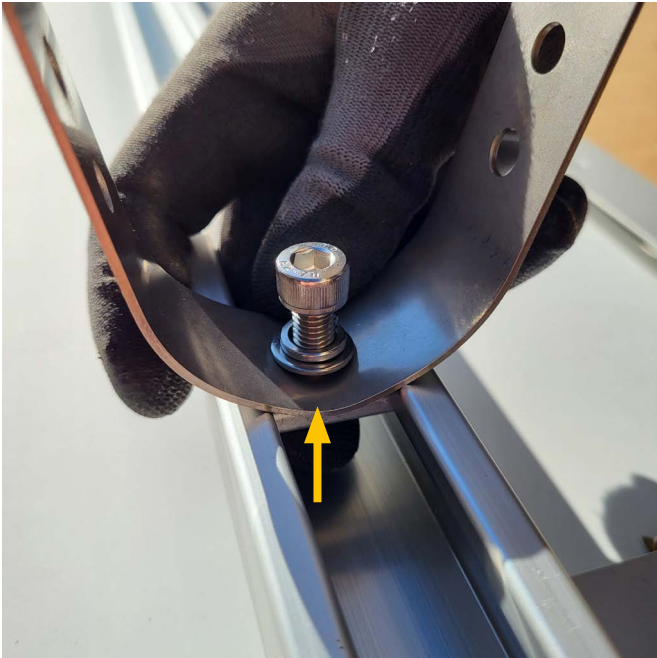
# MONTAGEANLEITUNG

Balkonkraftwerk SET-600W

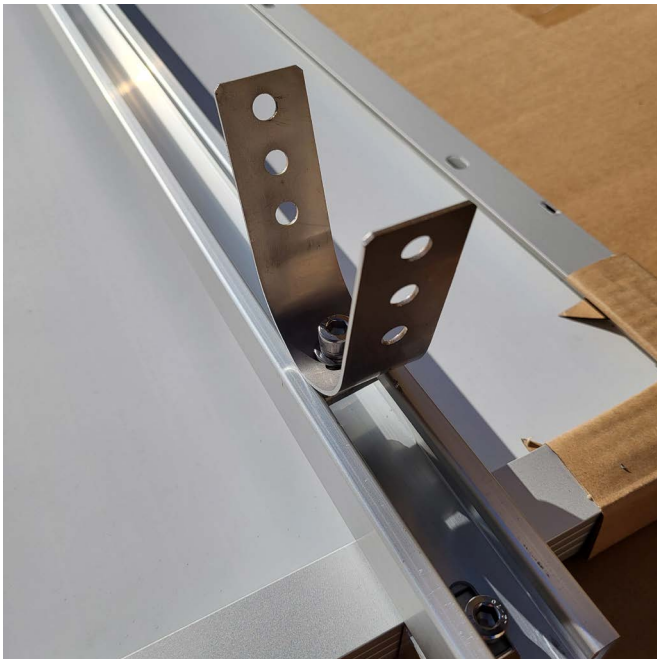


# MONTAGEANLEITUNG

Balkonkraftwerk SET-600W

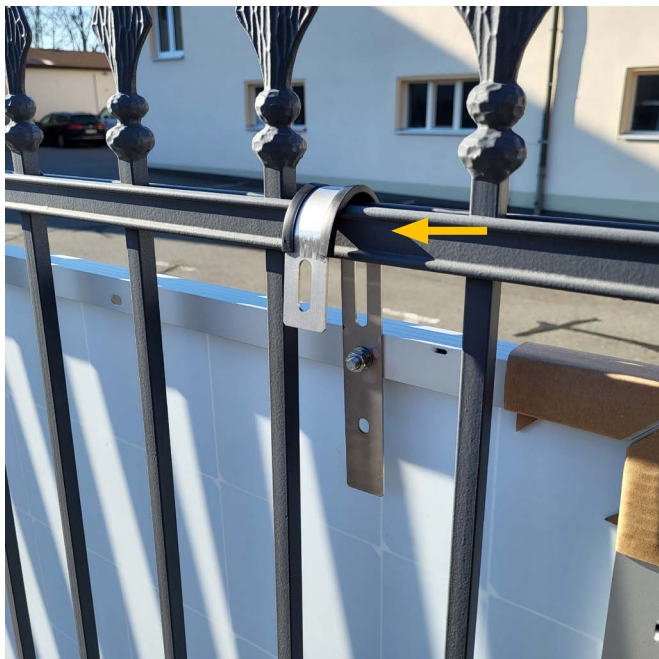
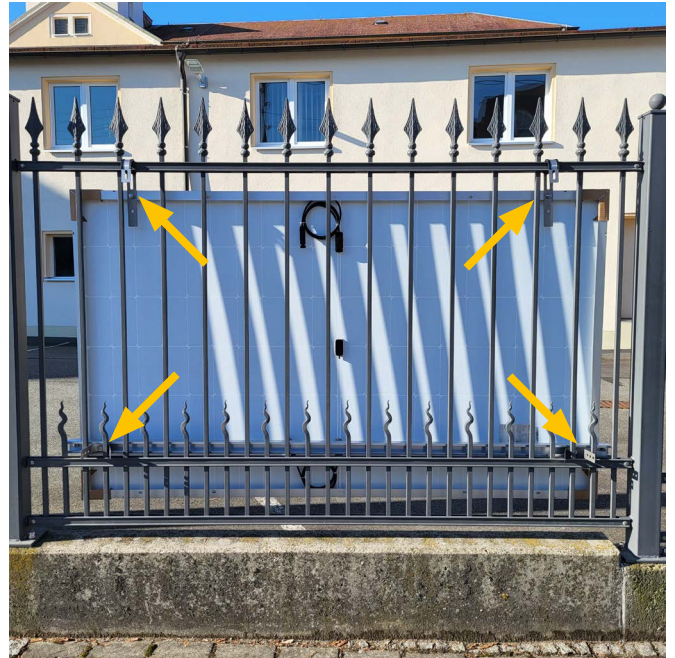


Anmerkung: nicht fest ziehen!



# MONTAGEANLEITUNG

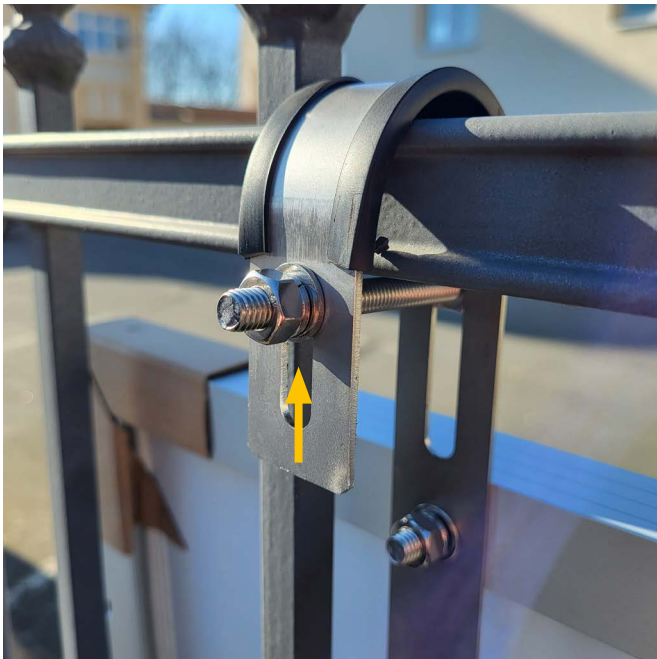
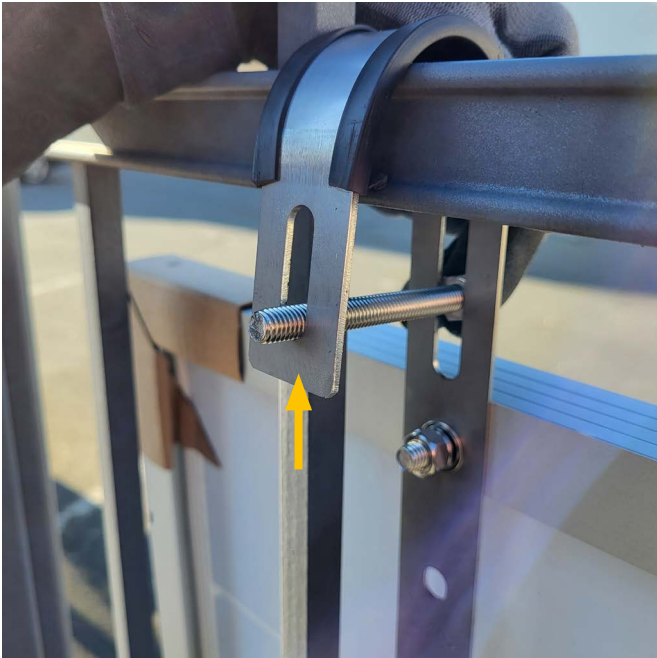
Balkonkraftwerk SET-600W





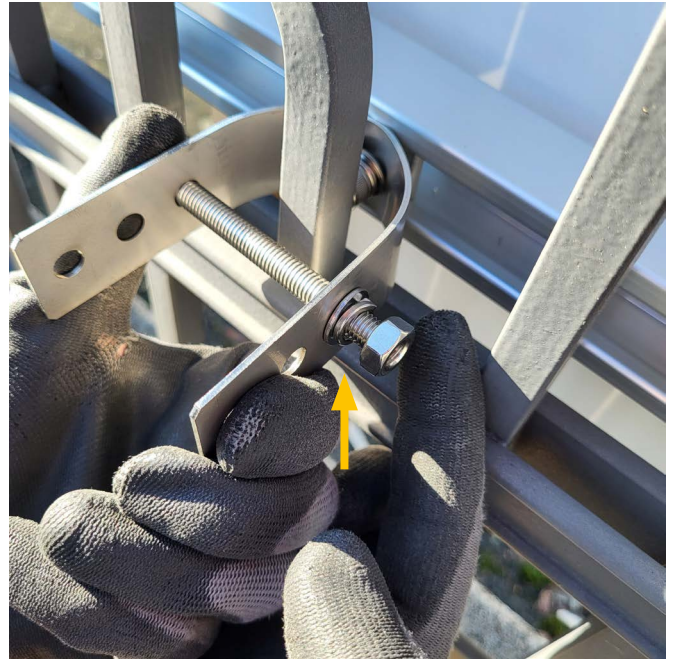
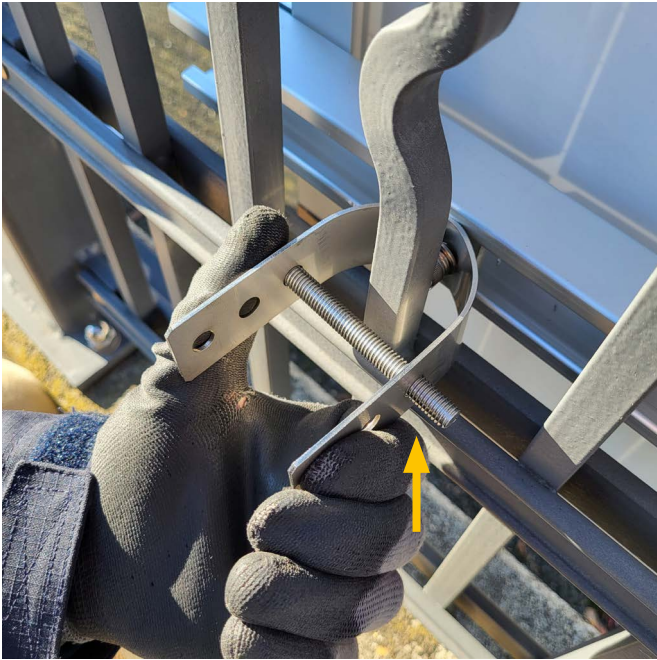
# MONTAGEANLEITUNG

Balkonkraftwerk SET-600W



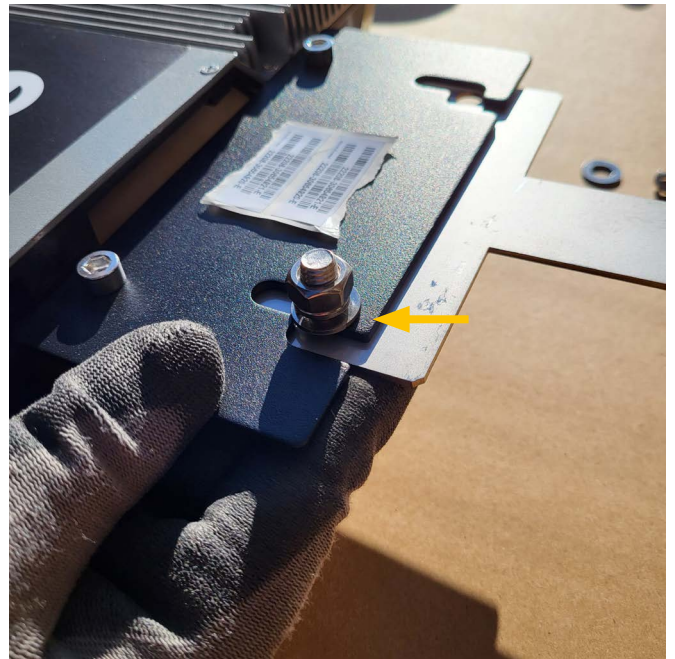
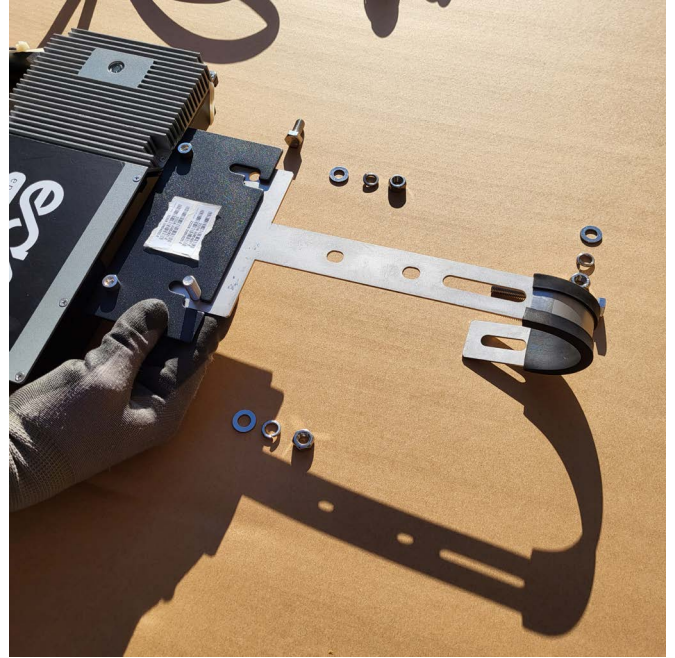
# MONTAGEANLEITUNG

Balkonkraftwerk SET-600W



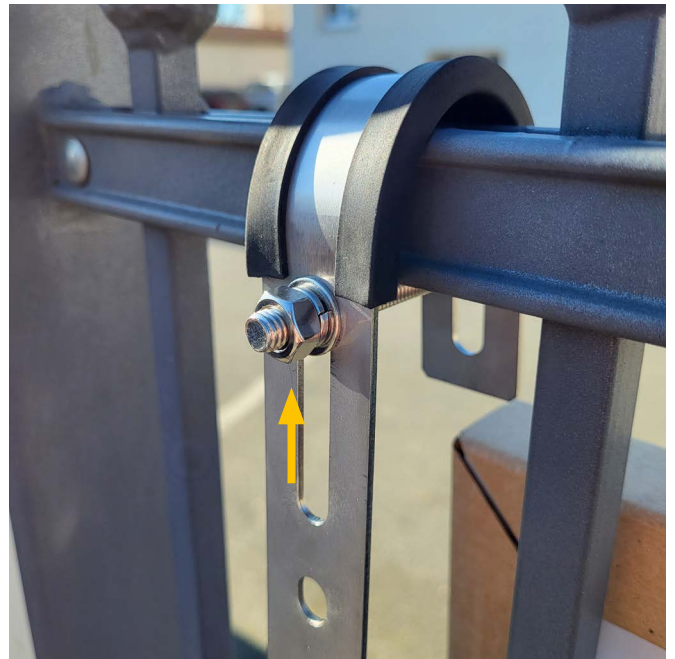
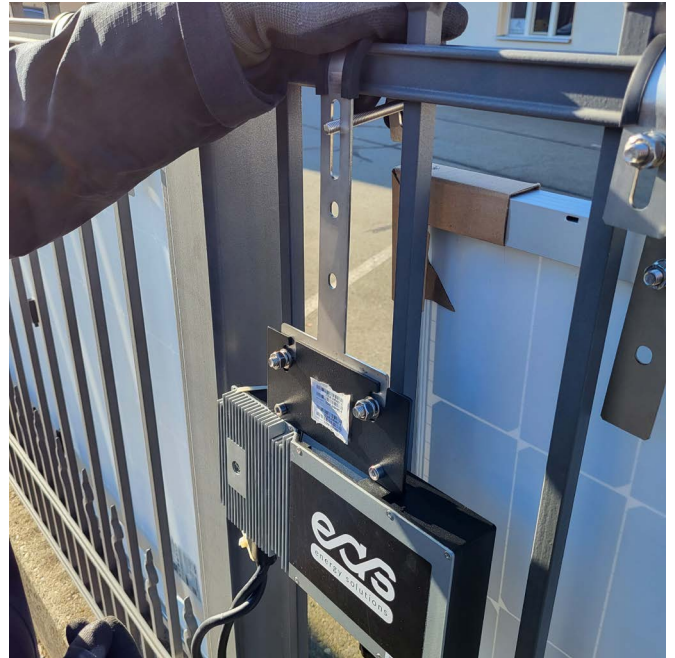
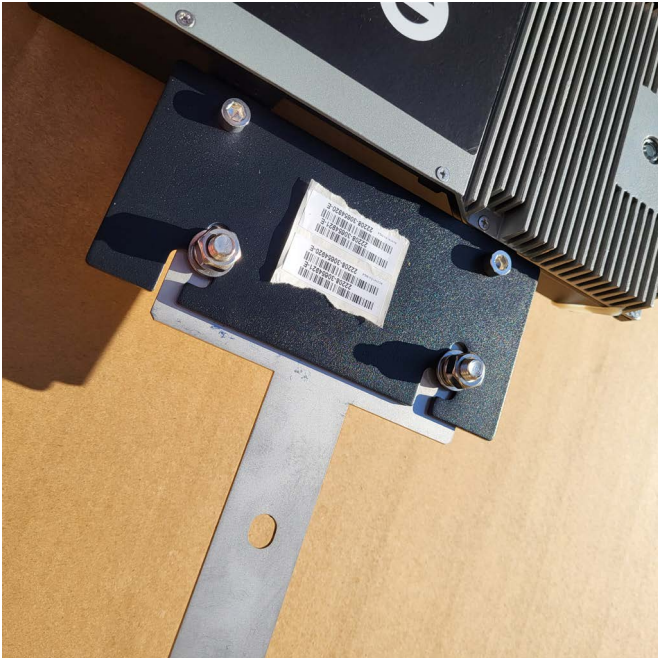
# MONTAGEANLEITUNG

Balkonkraftwerk SET-600W



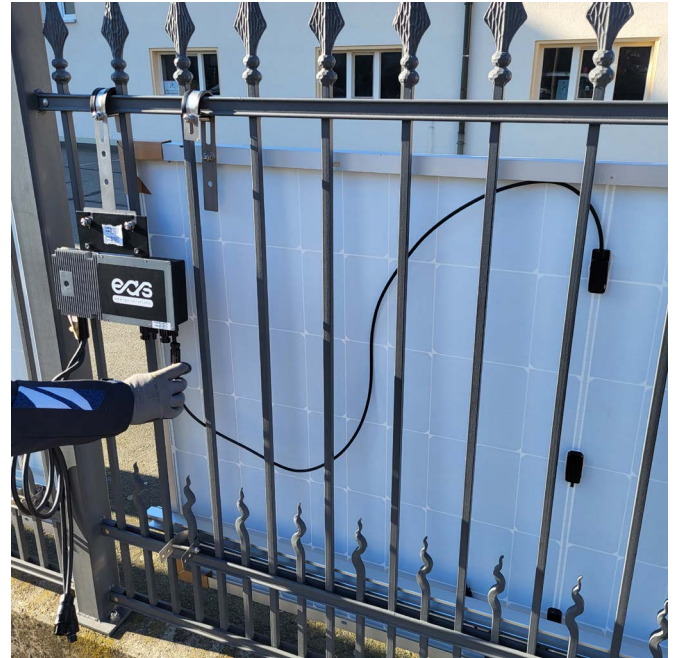
# MONTAGEANLEITUNG

Balkonkraftwerk SET-600W



# MONTAGEANLEITUNG

Balkonkraftwerk SET-600W



Anmerkung: Stecker müssen beim Einrasten „klicken“

# MONTAGEANLEITUNG

Balkonkraftwerk SET-600W



# MONTAGEANLEITUNG

Balkonkraftwerk SET-600W



# MONTAGEANLEITUNG

Balkonkraftwerk SET-600W

